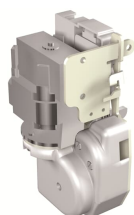


PRODUCT-DETAILS

# M XT7M 24-30 V AC/DC

# M XT7M 24-30 V AC/DC



## General Information

Extended Product Type	M XT7M 24-30 V AC/DC
Product ID	1SDA104919R1
EAN	8056221027175
Catalog Description	M XT7M 24-30 V AC/DC
Long Description	GEARED MOTOR DEVICE 24..30V AC-DC XT7M

## Ordering

EAN	8056221027175
Minimum Order Quantity	1 piece
Customs Tariff Number	85389099

## Dimensions

Product Net Width	130 mm
Product Net Height	80 mm
Product Net Depth / Length	200 mm
Product Net Weight	2.2 kg

## Container Information

Package Level 1 Units	1 piece
-----------------------	---------

Package Level 1 Width	130 mm
Package Level 1 Height	80 mm
Package Level 1 Depth / Length	200 mm
Package Level 1 Gross Weight	2.3 kg
Package Level 1 EAN	8056221027175

## Environmental

RoHS Status	Following EU Directive 2011/65/EU and Amendment 2015/863 July 22, 2019
-------------	--

## Additional Information

Configuration Type	Loose or configurable
Current Type	AC/DC
Order Multiple	1 piece
Product Main Type	Accessories for Tmax XT
Product Name	Accessory
Product Type	ACC
Rated Voltage (U <sub>r</sub> )	24...30 V AC 24...30 V DC
Standards	IEC 60947
Suitable For	XT7M
Suitable for Product Class	SACE Tmax XT

## Certificates and Declarations (Document Number)

Data Sheet, Technical Information	1SDC210100D0206 1SDC210099D0206
Instructions and Manuals	1SDH002013A1603
REACH Declaration	9AKK108466A1425
RoHS Information	9AKK108466A1424

## Classifications

ETIM 6	EC001030 - Motor operator for power circuit-breaker
ETIM 7	EC001030 - Motor operator for power circuit-breaker
WEEE Category	5. Small Equipment (No External Dimension More Than 50 cm)

## Categories

Low Voltage Products and Systems → Circuit Breakers → Moulded Case Circuit Breakers → Accessories for Tmax XT

