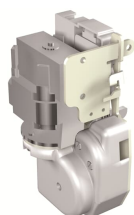


PRODUCT-DETAILS

M XT7M 220-250 V AC/DC

M XT7M 220-250 V AC/DC



General Information

Extended Product Type	M XT7M 220-250 V AC/DC
Product ID	1SDA104922R1
EAN	8015644070144
Catalog Description	M XT7M 220-250 V AC/DC
Long Description	GEARED MOTOR DEVICE 220..250V AC-DC XT7M

Ordering

EAN	8015644070144
Minimum Order Quantity	1 piece
Customs Tariff Number	85389099

Dimensions

Product Net Width	130 mm
Product Net Height	80 mm
Product Net Depth / Length	200 mm
Product Net Weight	2.2 kg

Container Information

Package Level 1 Units	1 piece
-----------------------	---------

Package Level 1 Width	130 mm
Package Level 1 Height	80 mm
Package Level 1 Depth / Length	200 mm
Package Level 1 Gross Weight	2.3 kg
Package Level 1 EAN	8015644070144

Environmental

RoHS Status	Following EU Directive 2011/65/EU and Amendment 2015/863 July 22, 2019
-------------	--

Additional Information

Configuration Type	Loose or configurable
Current Type	AC/DC
Order Multiple	1 piece
Product Main Type	Accessories for Tmax XT
Product Name	Accessory
Product Type	ACC
Rated Voltage (U _r)	220...250 V AC 220...250 V DC
Standards	IEC 60947
Suitable For	XT7M
Suitable for Product Class	SACE Tmax XT

Certificates and Declarations (Document Number)

Data Sheet, Technical Information	1SDC210100D0206 1SDC210099D0206
Instructions and Manuals	1SDH002013A1603
REACH Declaration	9AKK108466A1425
RoHS Information	9AKK108466A1424

Classifications

ETIM 6	EC001030 - Motor operator for power circuit-breaker
ETIM 7	EC001030 - Motor operator for power circuit-breaker
WEEE Category	5. Small Equipment (No External Dimension More Than 50 cm)

Categories

Low Voltage Products and Systems → Circuit Breakers → Moulded Case Circuit Breakers → Accessories for Tmax XT

